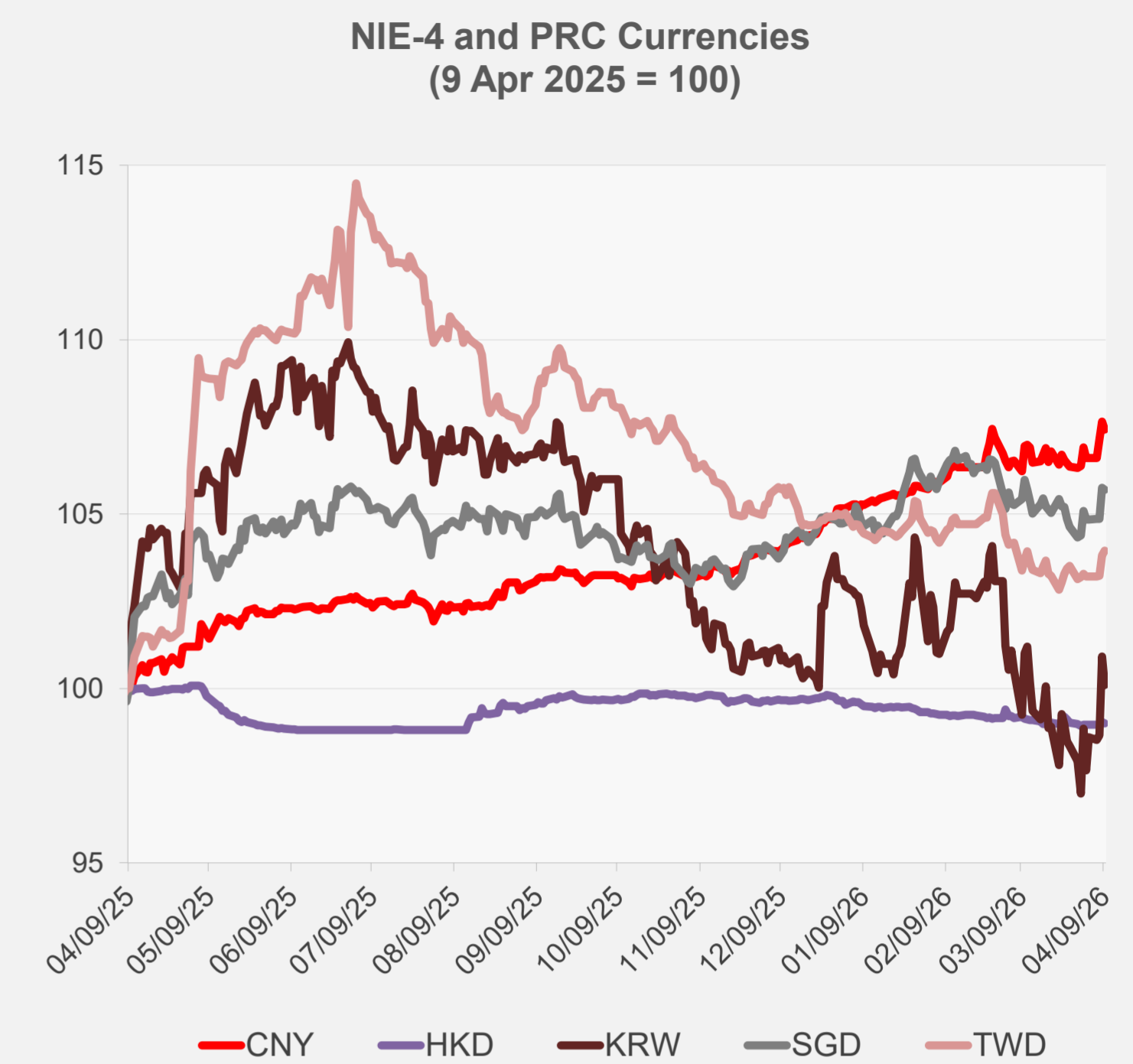
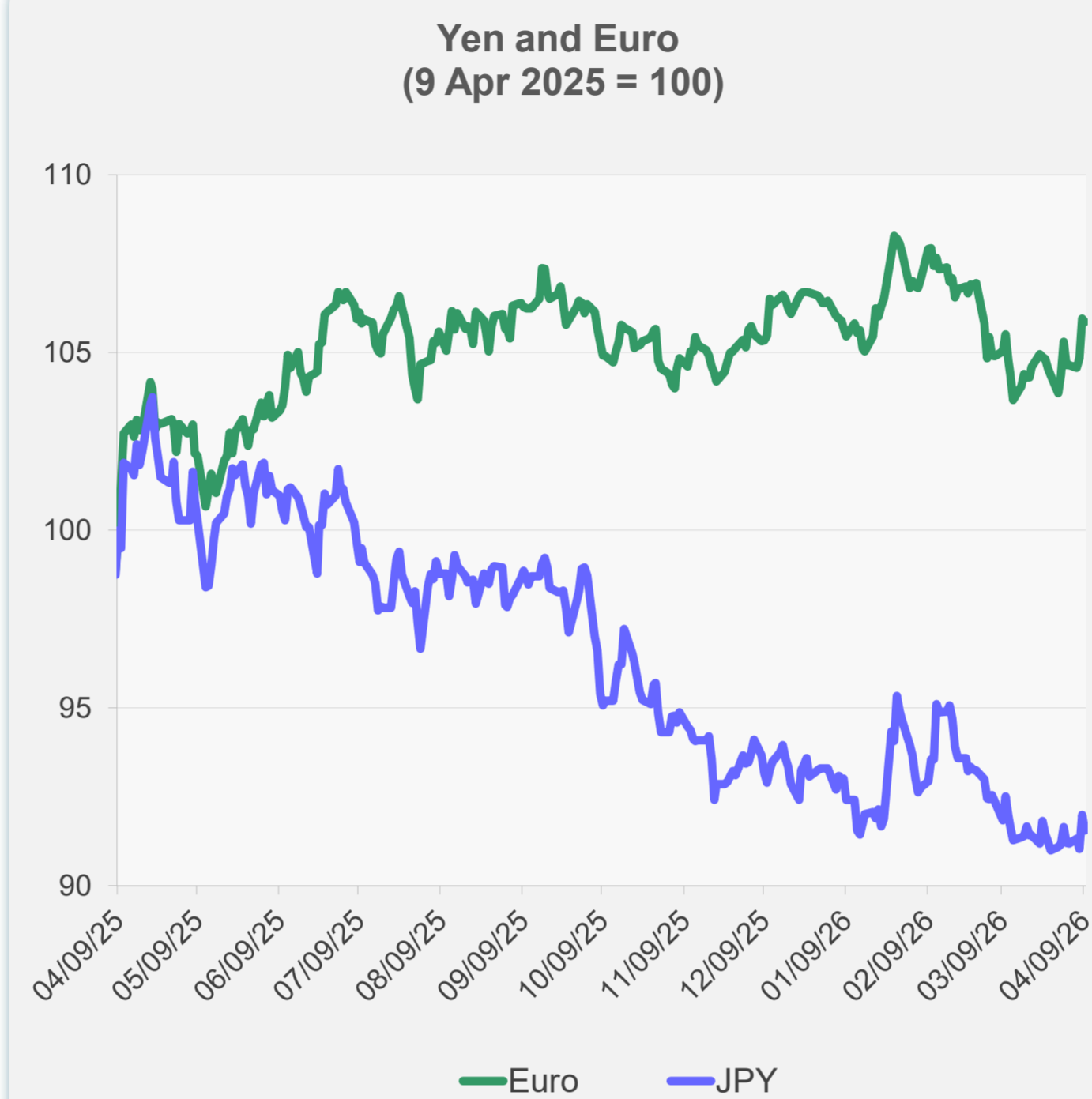
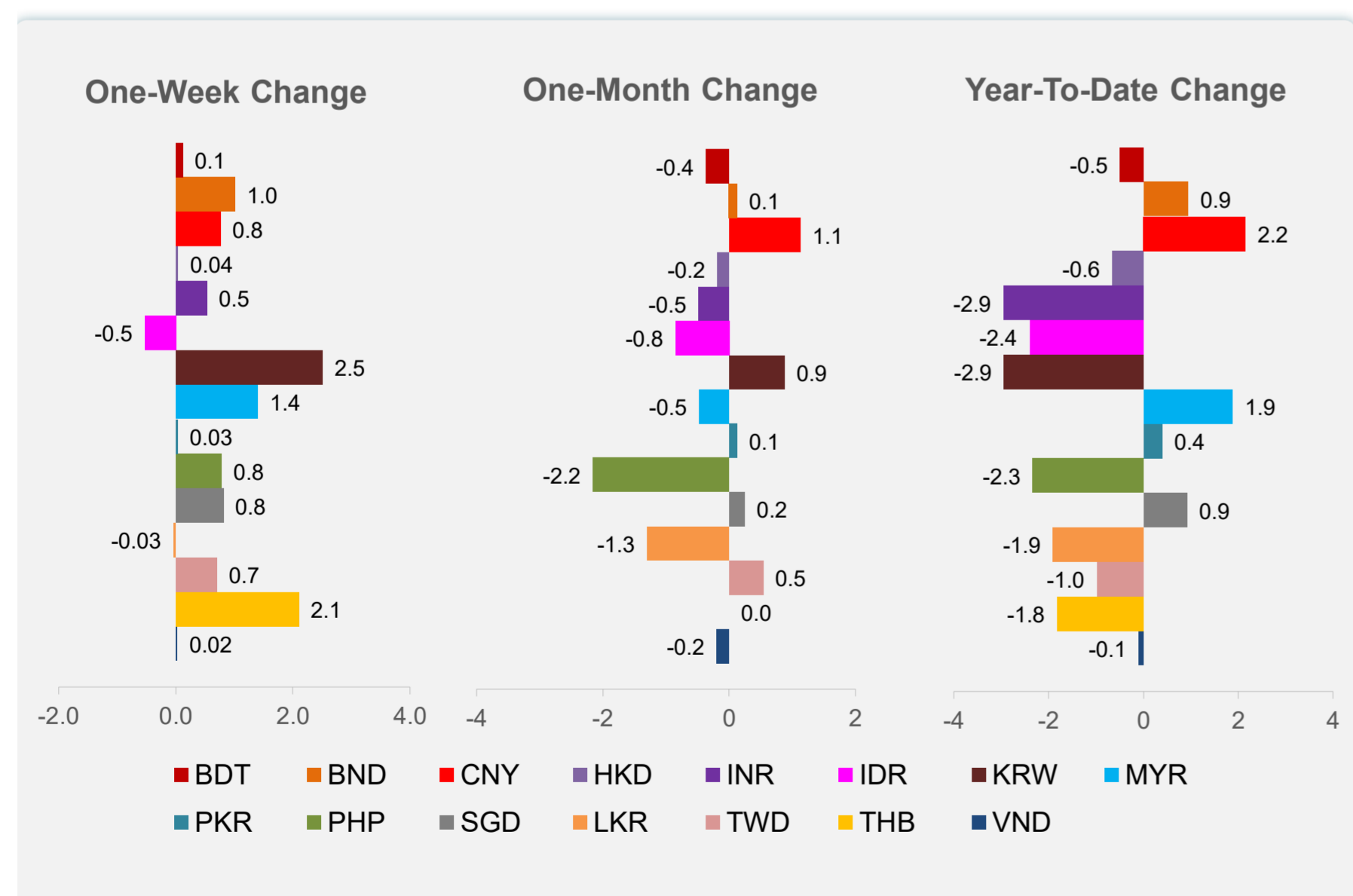
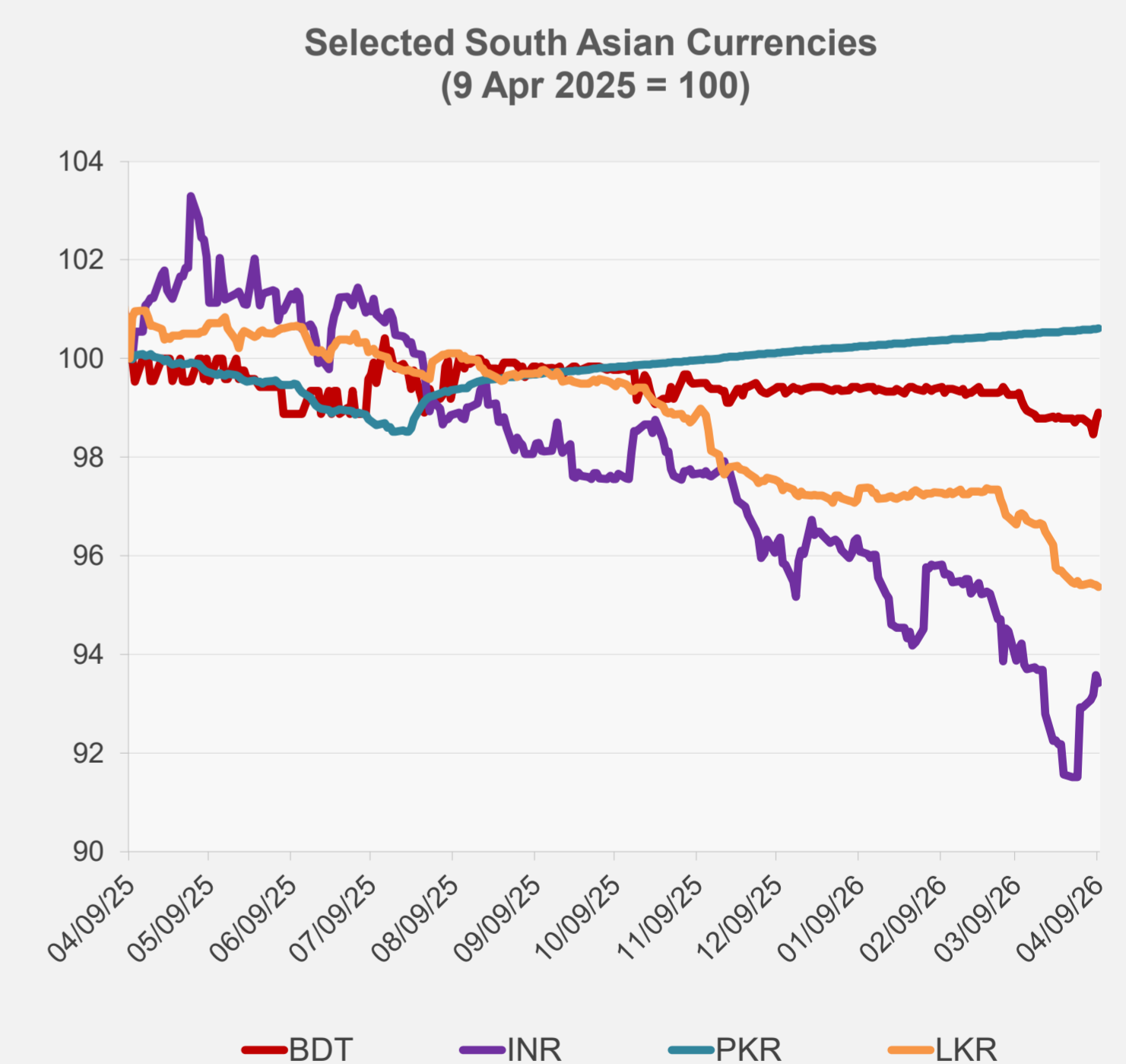
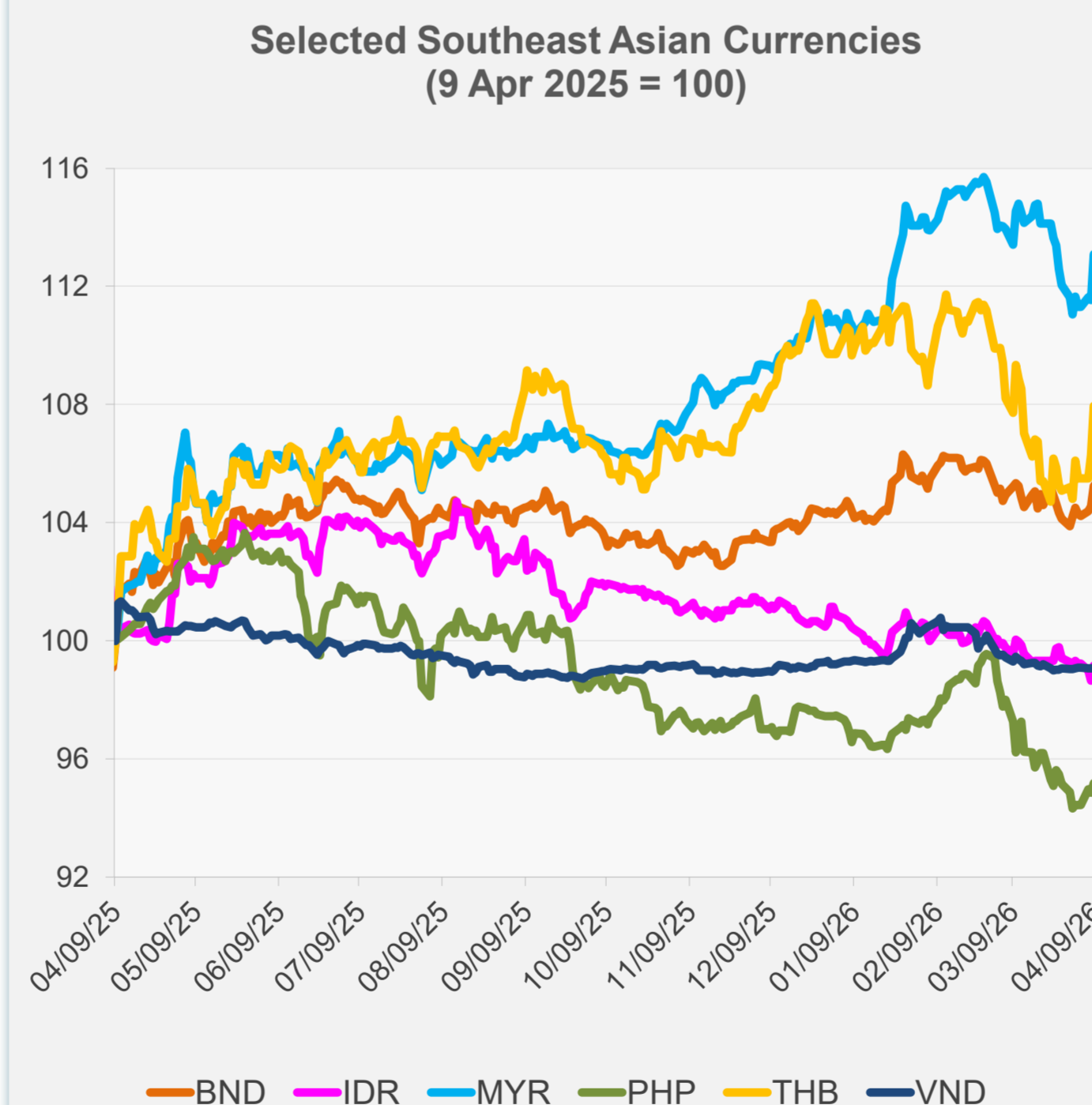


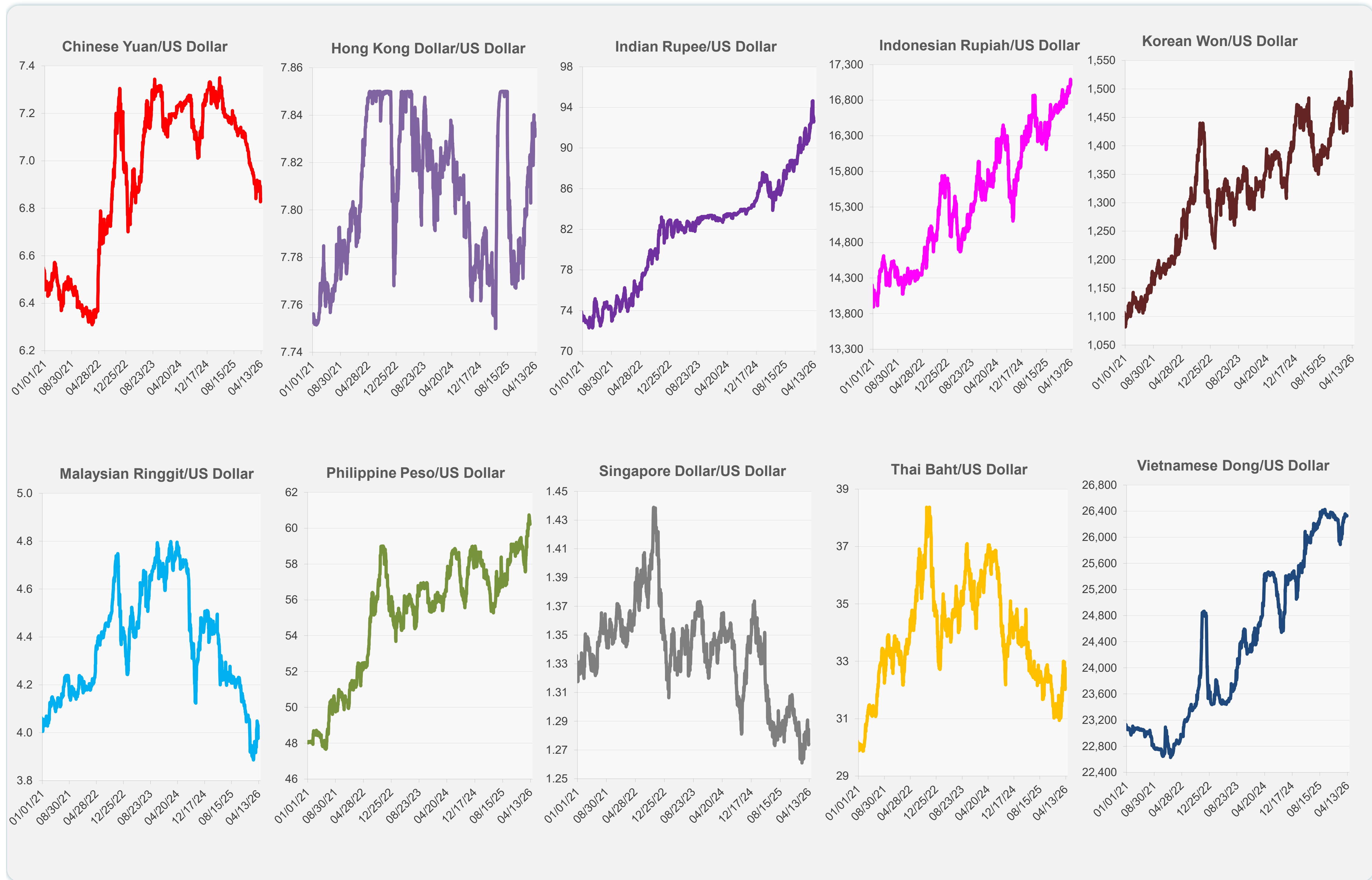
	Latest Closing	% change from Previous Day	% change from 01-Jan-26
Euro	0.86	-0.09	-0.51
Japanese yen (JPY)	158.97	-0.48	-1.88
Bangladeshi taka (BDT)	122.85	0.16	-0.49
Brunei dollar (BND)	1.27	0.09	0.94
Chinese yuan (CNY)	6.84	-0.20	2.15
Hong Kong dollar (HKD)	7.83	-0.04	-0.65
Indian rupee (INR)	92.71	-0.17	-2.95
Indonesian rupiah (IDR)	17,085.00	-0.44	-2.40
Korean won (KRW)	1,482.50	-0.80	-2.93
Malaysian ringgit (MYR)	3.98	-0.18	1.88
Pakistan rupee (PKR)	279.00	0.01	0.39
Philippine peso (PHP)	60.21	0.00	-2.33
Singapore dollar (SGD)	1.27	-0.05	0.92
Sri Lanka rupee (LKR)	315.60	-0.03	-1.90
Taipei,China NT dollar (TWD)	31.75	0.12	-0.98
Thai baht (THB)	32.09	-0.21	-1.82
Vietnamese dong (VND)	26,325.00	0.03	-0.09



NIE = Newly Industrialized Economies



Note: Negative/Decreasing values indicate depreciation of local currency, and positive/increasing values indicate appreciation.
Source: ADB calculations using data from Bloomberg and Haver Analytics.

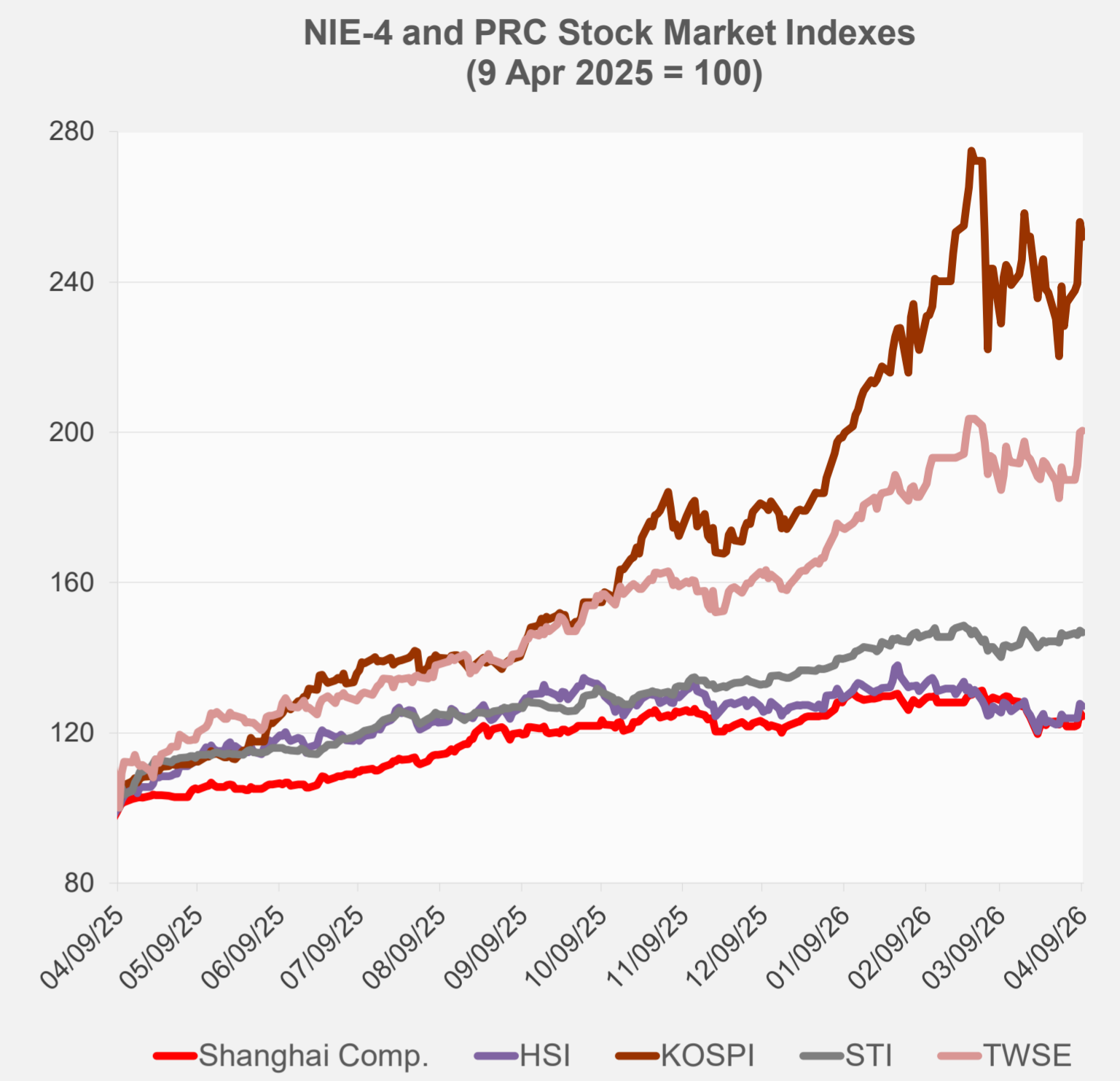


Source: Haver Analytics.

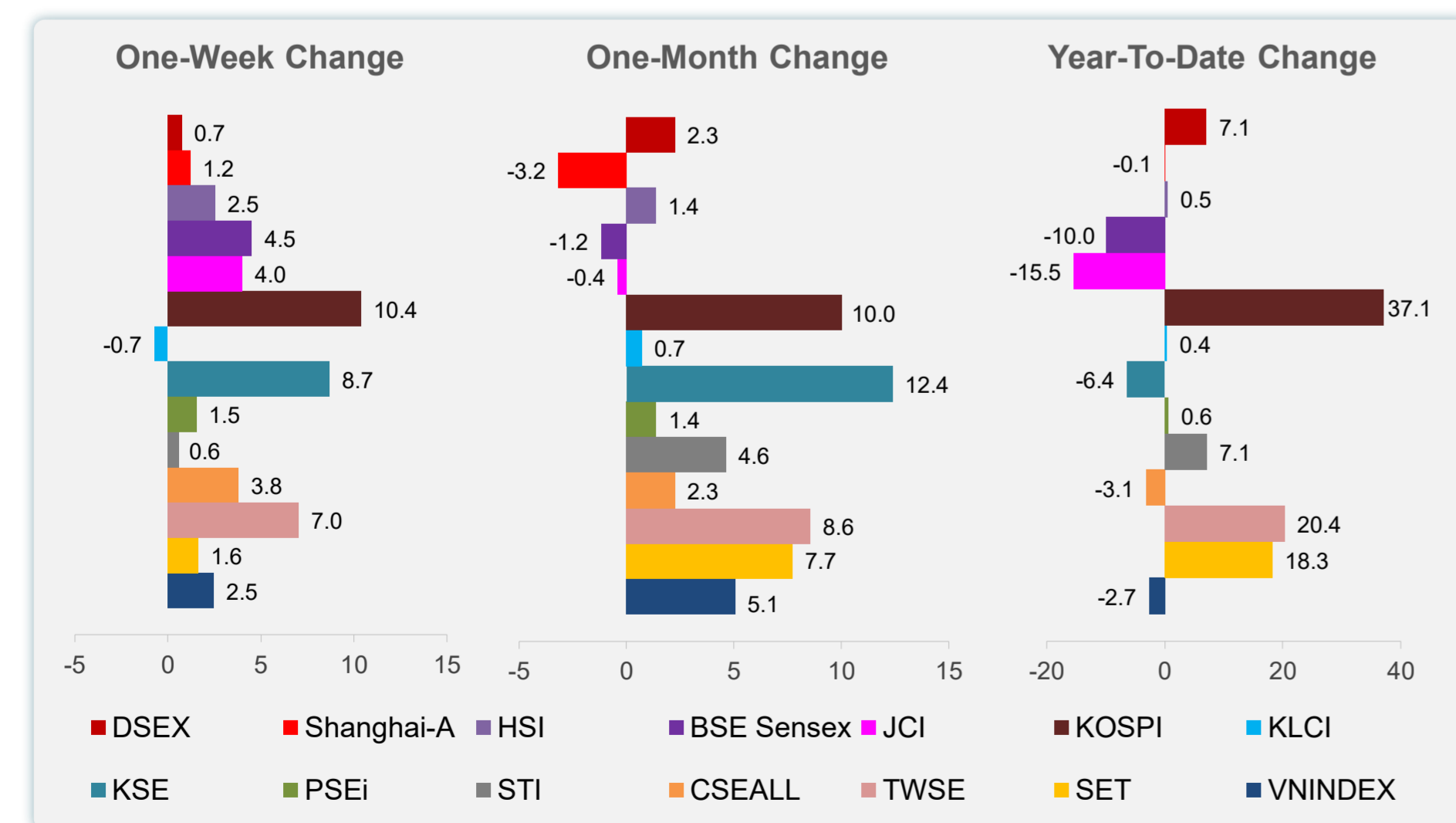
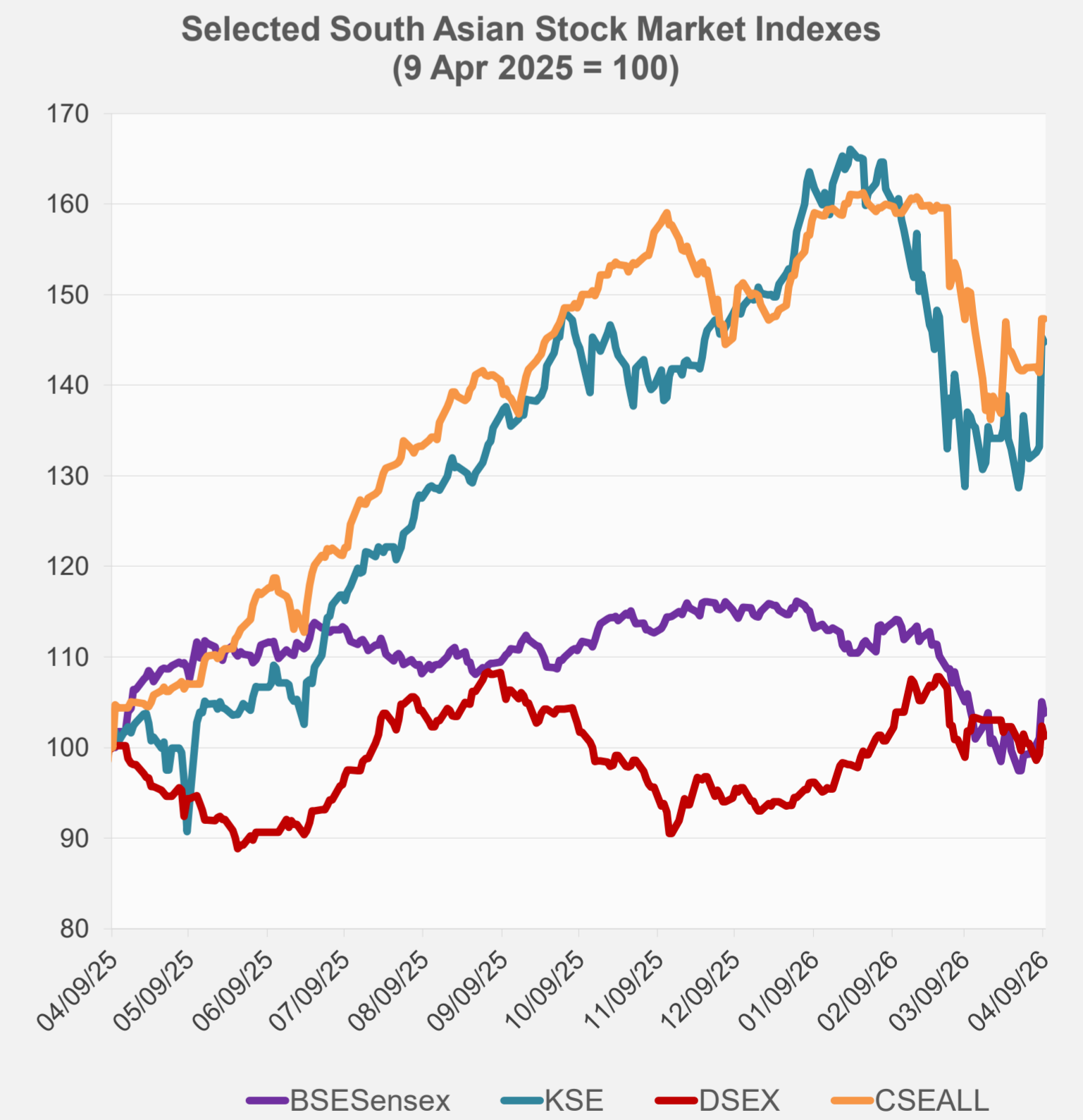
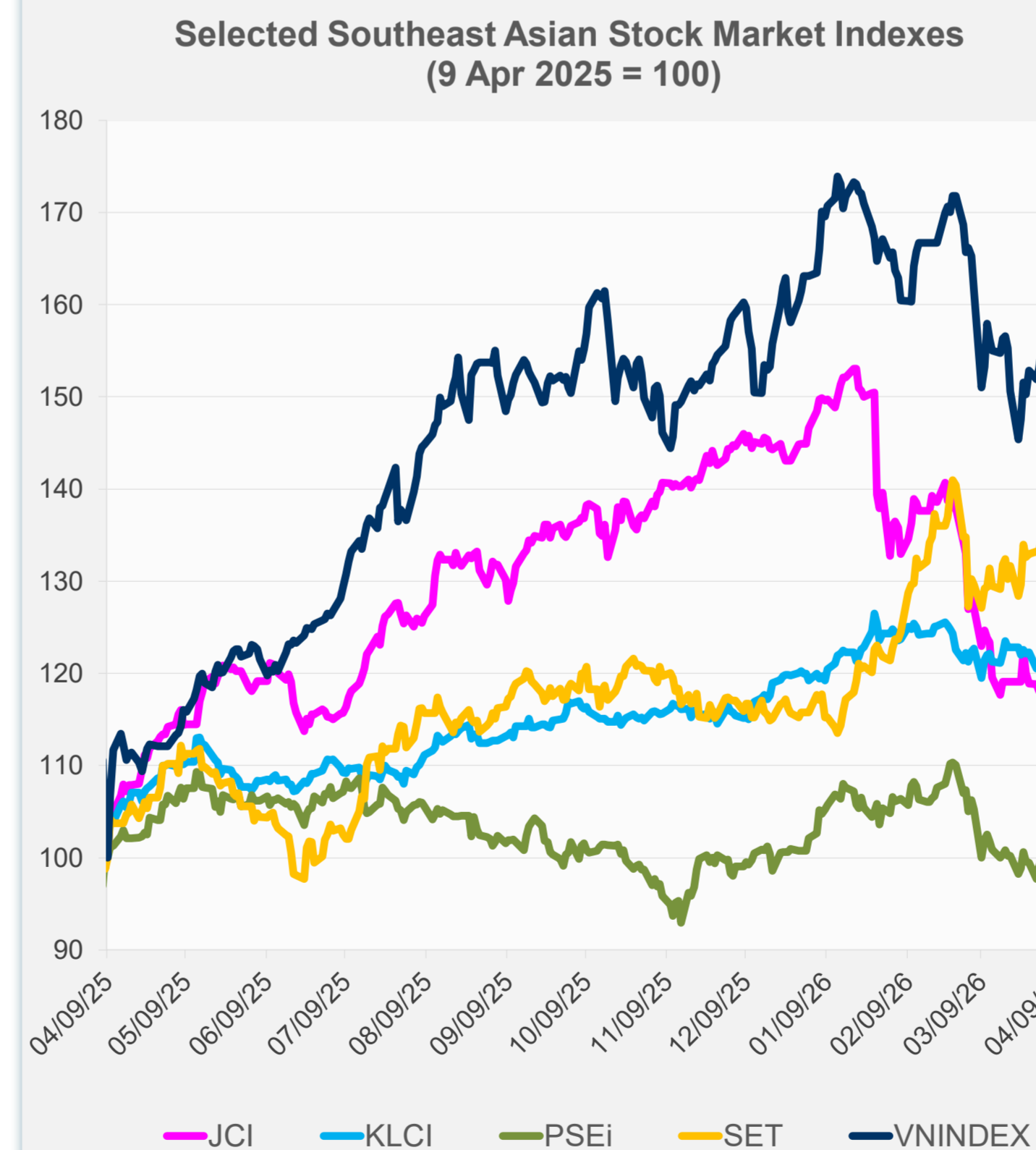
Daily Market Watch
STOCK INDEXES

10 April 2026, 9:00 AM Manila

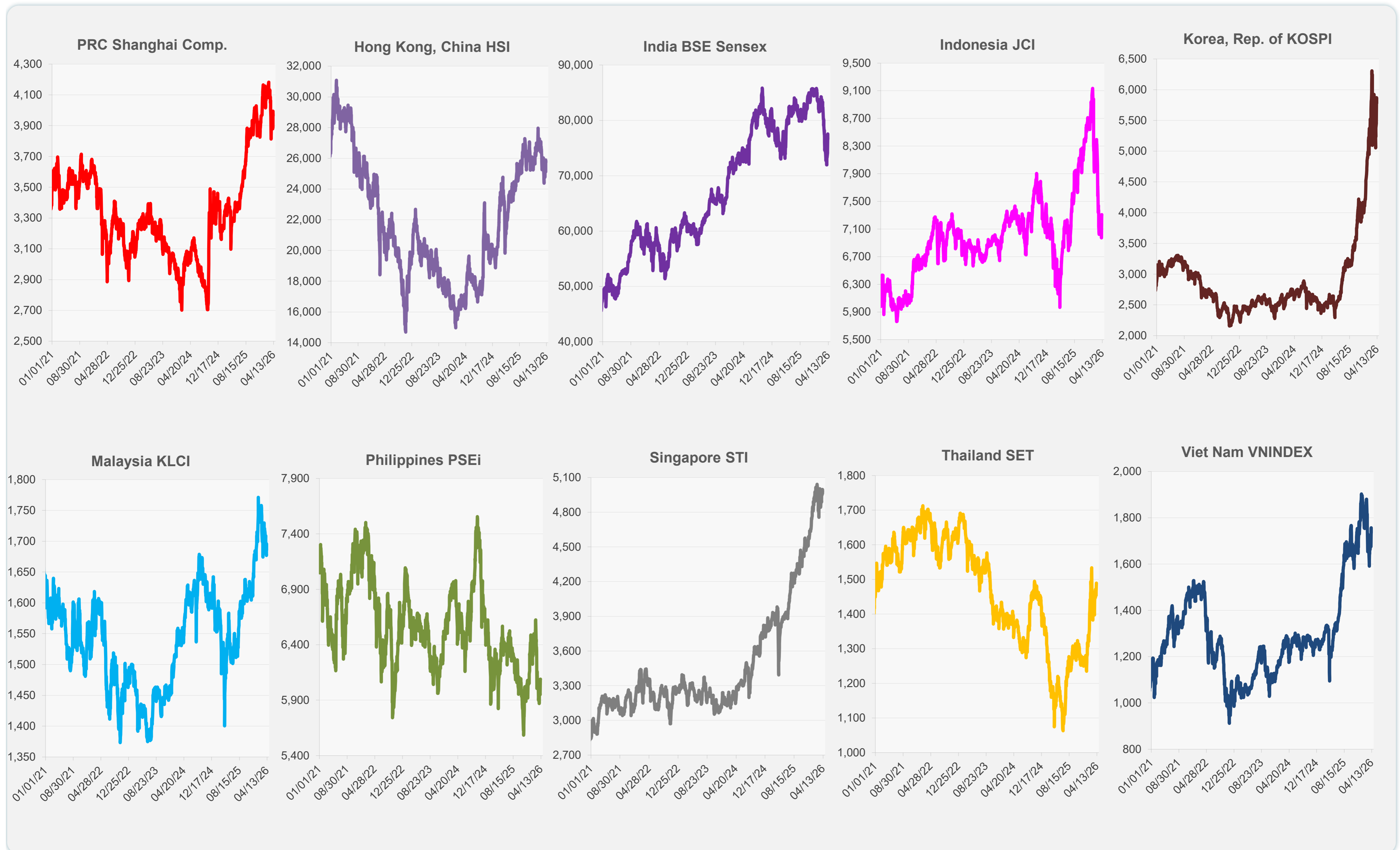
	Latest Closing	% change from Previous Day	% change from 01-Jan-26
US Dow Jones Ind Avg	48,185.80	0.58	0.25
US NASDAQ	22,822.42	0.83	-1.81
US S&P 500	6,824.66	0.62	-0.30
UK FTSE 100	13,689.00	1.12	21.56
EURO STOXX 50	5,896.29	-0.29	1.81
Japan NIKKEI 225	55,895.32	-0.73	11.04
Bangladesh DSEX	5,257.70	-1.13	7.07
PRC Shanghai Comp.	3,966.17	-0.72	-0.07
Hong Kong, China HSI	25,752.40	-0.54	0.48
India BSE Sensex	76,631.65	-1.20	-10.04
Indonesia JCI	7,307.59	0.39	-15.49
Korea, Rep. of KOSPI	5,778.01	-1.61	37.11
Malaysia KLCI	1,686.24	-0.59	0.36
Pakistan KSE 100	165,242.20	-0.36	-6.36
Philippines PSEi	6,089.91	0.00	0.61
Singapore STI	4,977.08	-0.38	7.12
Sri Lanka CSEALL	21,917.60	0.00	-3.12
Taipei, China TWSE	34,861.16	0.29	20.36
Thailand SET	1,489.66	0.31	18.26
Viet Nam VNINDEX	1,736.68	-1.13	-2.68



NIE = Newly Industrialized Economies



Sources: ADB calculations using data from Bloomberg and CEIC Data Company.

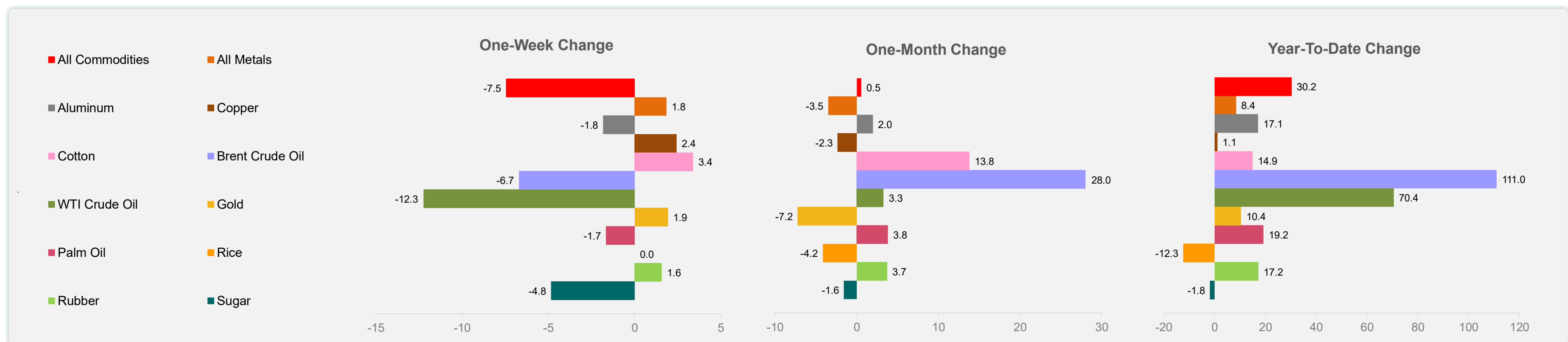
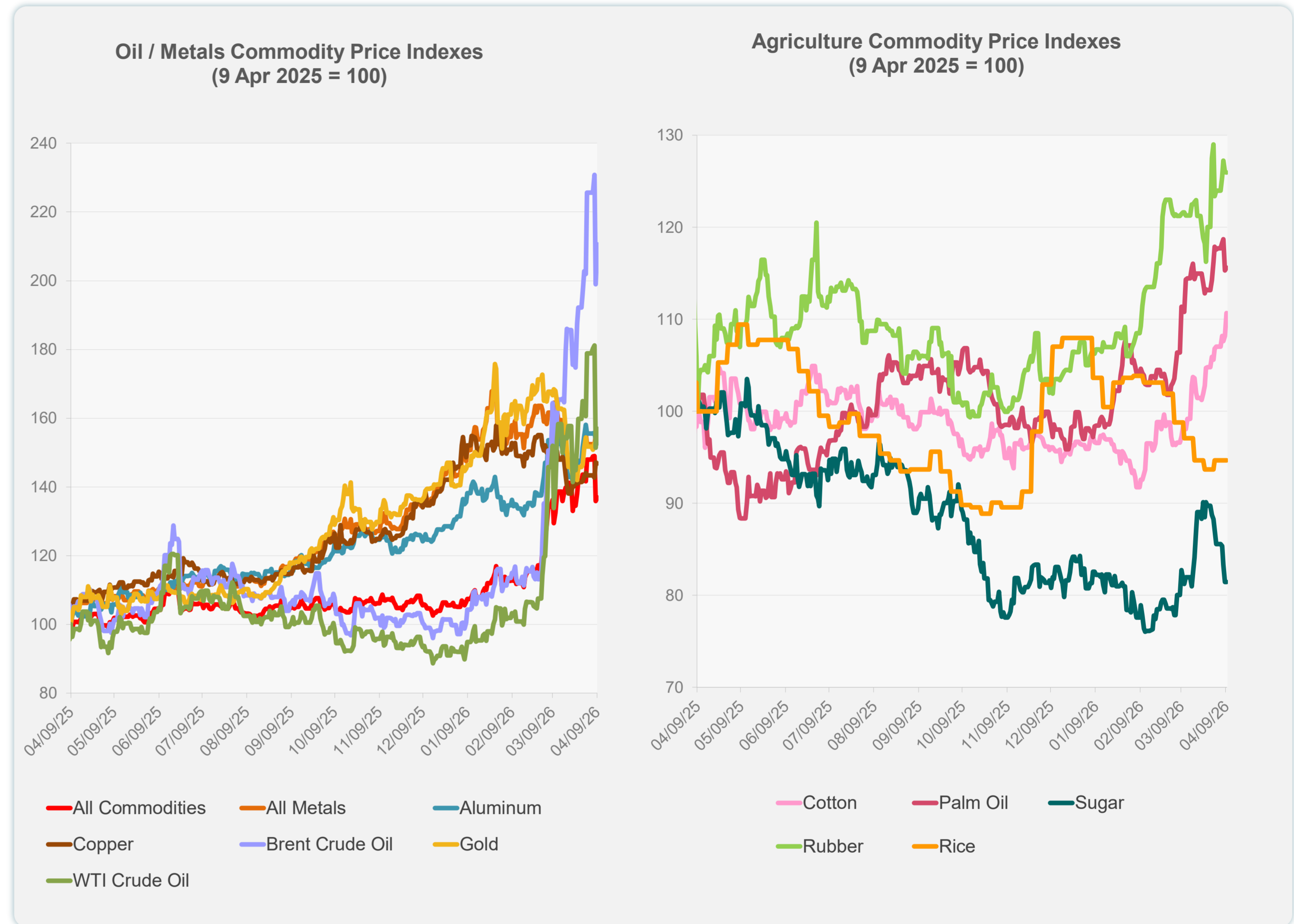


Sources: ADB calculations using data from Bloomberg and CEIC Data Company.

Daily Market Watch
COMMODITY PRICES

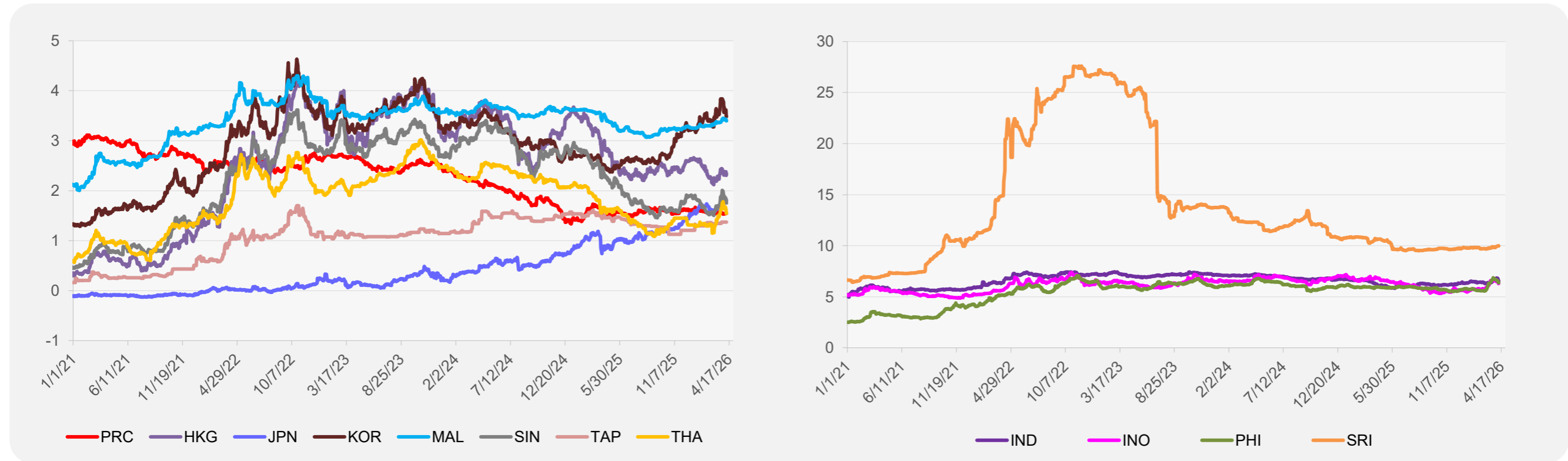
	Unit	Latest Closing	% change from Previous Day	% change from 01-Jan-26
S&P All Commodities	US\$	714.26	0.80	30.22
S&P All Metals	US\$	481.17	0.30	8.43
Aluminum	US\$/metric ton	3,474.81	-0.68	17.08
Copper	US\$/metric ton	12,585.91	-0.21	1.06
Cotton	US cents/lb	71.26	2.28	14.90
Brent Crude Oil	US\$/barrel	131.79	5.83	111.04
WTI Crude Oil	US\$/barrel	97.87	3.66	70.45
Gold	US\$/troy oz	4,766.89	1.01	10.36
Palm Oil	US\$/metric tonne	1,154.71	0.29	19.21
Rice ¹	US\$/metric ton	391.00	0.00	-12.33
Rubber ²	US\$/kg	251.90	-0.04	17.16
Sugar	US cents/lb	14.53	0.00	-1.76

¹ Latest closing price from 1 April 2026.
² Singapore Exchange, Ribbed Smoked Sheet Rubber.

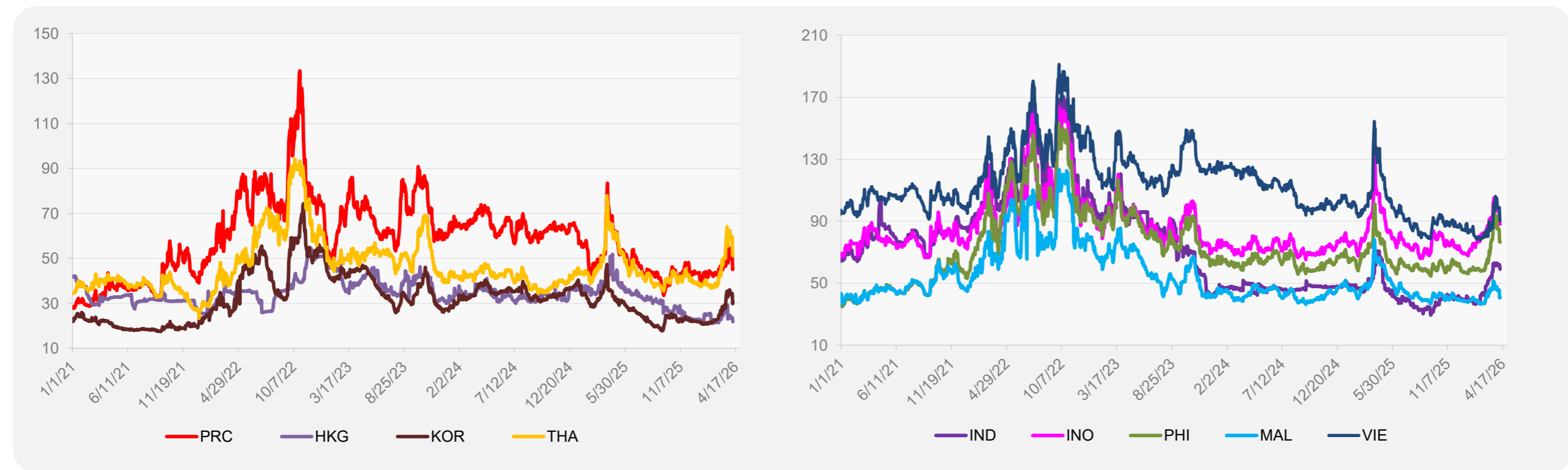


Source: ADB calculations using data from Bloomberg.

5-YEAR LOCAL CURRENCY GOVERNMENT BOND YIELDS (%)



5-YEAR CREDIT DEFAULT SWAP¹



¹ In USD and based on sovereign bonds.
Source: ADB calculations using data from Bloomberg.